

LS-WRAP (2 Lamp) T8 Post-Painted Fixture

High efficiency T8 surface-mounted fluorescent wrap fixture with specular reflector or, for softer illumination, a high-reflectance white reflector.

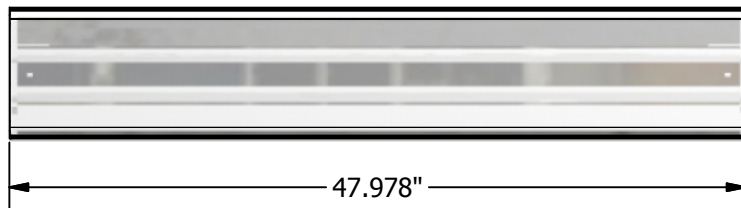
Housing built from 20 gauge steel post-painted white. Suitable for individual or continuous row mounting. Easy lens removal for maintenance and cleaning.

Ideal for general purpose indoor applications.

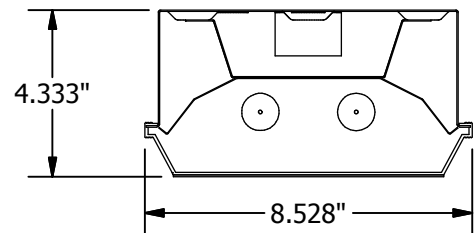


LS-WRAP (2 Lamp)

All fixtures **CSA** approved.



BOTTOM VIEW



END VIEW

Ordering Logic (Choose from available options)

LS-WRAP						
MODEL	FINISH	REFLECTOR MATERIAL	NO. LAMPS/ FIXTURE	BALLAST TYPE	MOUNTING	VOLTAGE
LS-WRAP	<input type="checkbox"/> PS - POWDER SMOOTH WHITE	<input type="checkbox"/> M - MIRO IV <input type="checkbox"/> A90 - A90 WHITE	<input type="checkbox"/> 141 - 1 LAMP (1'x4') <input type="checkbox"/> 142 - 2 LAMPS (1'x4') <input type="checkbox"/> 121 - 1 LAMP (1'x2') <input type="checkbox"/> 122 - 2 LAMPS (1'x2')	<input type="checkbox"/> OI-4 - ELECTRONIC 4-LAMP <input type="checkbox"/> OI-2 - ELECTRONIC 2-LAMP <input type="checkbox"/> XX-X - SLAVE	<input type="checkbox"/> 1 - SURFACE <input type="checkbox"/> 2 - PENDANT	<input type="checkbox"/> 1 - 120 VOLT <input type="checkbox"/> 2 - 277 VOLT <input type="checkbox"/> 3 - 347 VOLT