

# CL-LUMIVERSA (8 Lamp T5HO)

# CUSTOM LIGHTING LTD.

## High-Bay Fixture

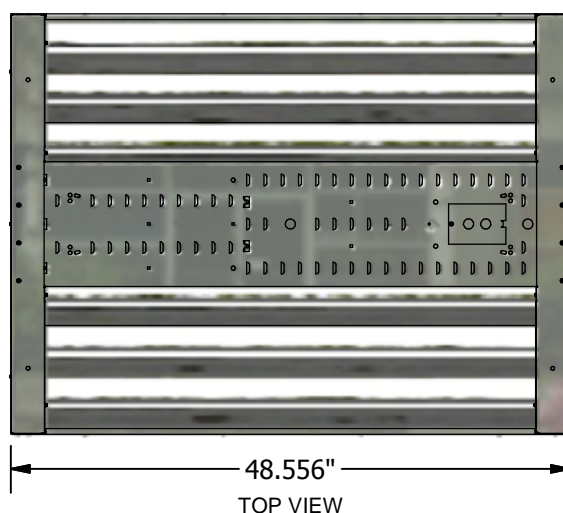
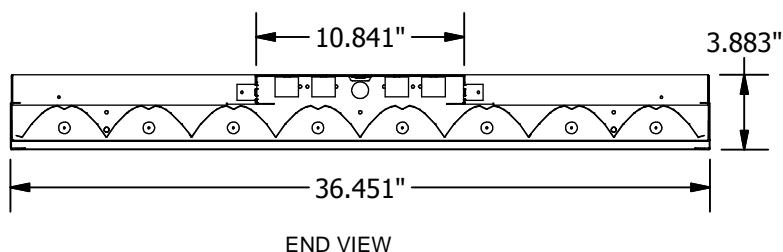
Ideal for both high and mid-bay applications, the CL-LUMIVERSA (8 Lamp) is engineered to utilize eight T5HO / T8 / T8VHO lamps and a highly efficient specular Miro IV reflector. Features include:

- Luminaire housing made from galvanized or post-painted steel
- Numerous mounting capabilities: chain, aircraft cable, V-hook, and surface (with optional mounting kit)
- Narrow ballast cavity with venting for optimal heat dissipation
- Exceptional optical performance in a choice of narrow, medium, or wide distribution patterns
- Multiple switching capable: 2 lamps, 4 lamps, 6 lamps or 8 lamps on
- Optional clear polycarbonate Lexan lens or post-painted wireguard to protect lamps and reflector
- Optional reflector uplighting

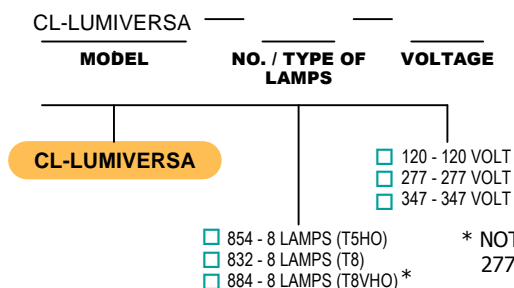


CL-LUMIVERSA (8 Lamp T5HO)

All fixtures **CSA** approved.



### Ordering Logic (Choose from available options)



### Options

#### Multiple Switching (see right)

- ☐ A (No Switching)
- ☐ B (Standard)
- ☐ C

#### Light Distribution

- ☐ Narrow
- ☐ Medium
- ☐ Wide (Standard)

#### Fixture Colour

- ☐ Galvanized (Standard)
- ☐ White

#### Surface Mounting Kit

- ☐ None (Standard)
- ☐ Include Surface Mounting Kit

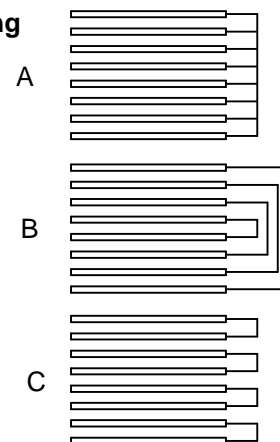
#### Lens / Wireguard

- ☐ None (Standard)
- ☐ Clear Acrylic Lens
- ☐ Clear Lexan Lens
- ☐ Wireguard

#### Reflector Uplighting

- ☐ None (Standard)
- ☐ Uplighting

### Multiple Switching Wiring Diagram



**Custom Lighting Ltd.** 7923 Coronet Road, Edmonton, AB, T6E 4N7

Tel: (780) 463-8014 Fax: (780) 463-2216 Email: sales@customlightingltd.com [www.customlightingltd.com](http://www.customlightingltd.com)